

## Installation instructions for the pCon.planner

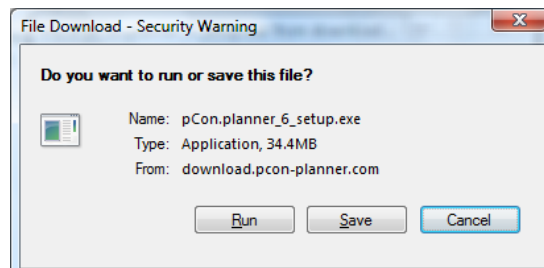
Follow this checklist to download and install the pCon.planner on your computer system:

### 1.) System requirements

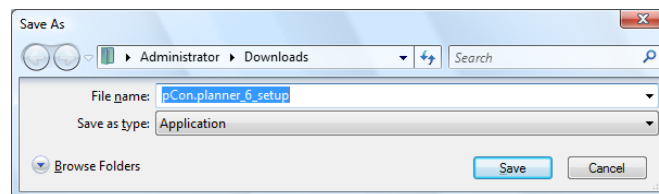
First check whether your computer system meets the system requirements of pCon.planner 6. You can find the system requirements at the following website: [www.pcon-planner.com/en/download/system-requirements.html](http://www.pcon-planner.com/en/download/system-requirements.html).

### 2.) Download

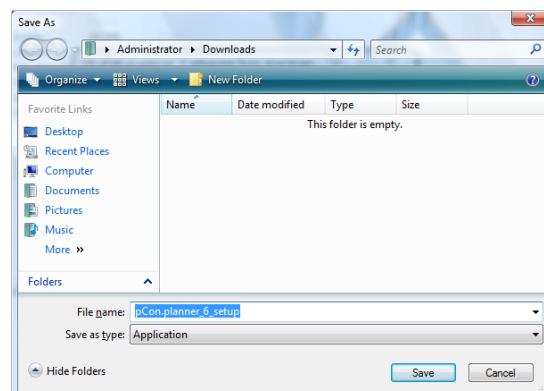
- Download the installation file pCon.planner\_6\_Setup.exe from our website [www.pCon-planner.com](http://www.pCon-planner.com) to your computer. To do this navigate to the download page and click the download icon.
- The download dialog opens.



- Click "Save".
- The next window allows you to select the folder where to save the file.

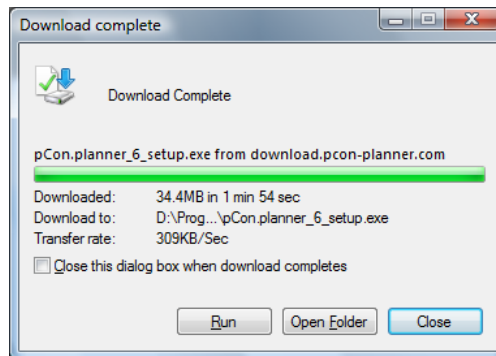


- Click the down arrow left to "Browse Folders" and navigate to the destination folder.



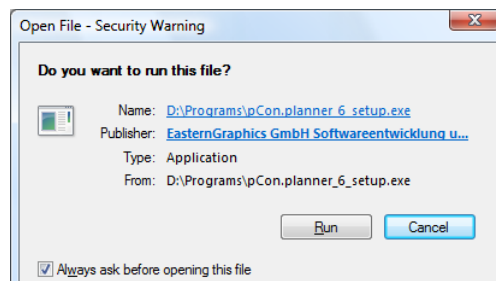


- Confirm with "Save".
- An interim box displays the progress of the download. Click "Close" when the download is complete.

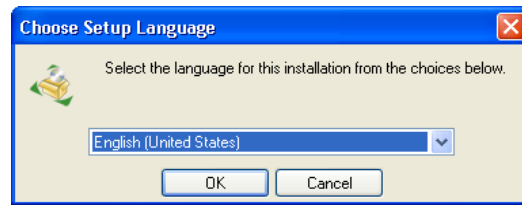


### 3.) Installation

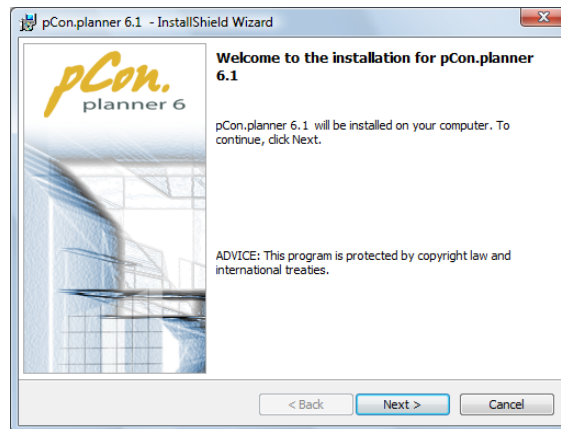
- Navigate to the installation file you have downloaded. Then start installation by doubleclicking on the installation file.
- If a security warning is displayed, click "Run".



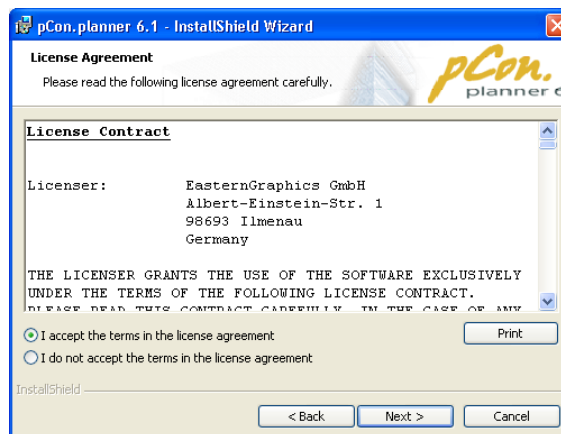
- The window opening now prompts you to select your language. Click on the down arrow to the right of the drop down menu and select your language from the list. Your selection refers to the setup language as well as the language of the application.



- Now click “OK”.
- An Interim Window informs you that the Installation Wizard is being prepared.
- Then the Installation Wizard opens.



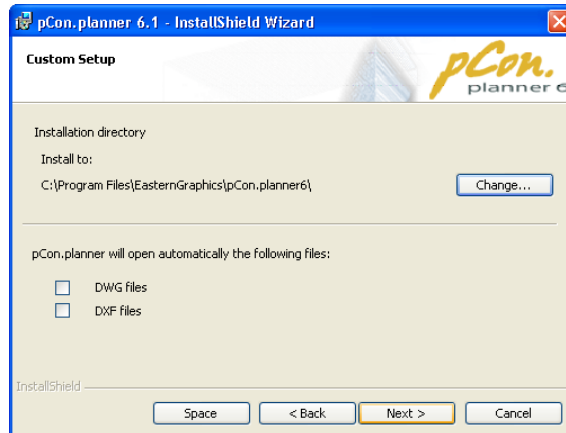
- Click “Next”
- Now the License Agreement is displayed.



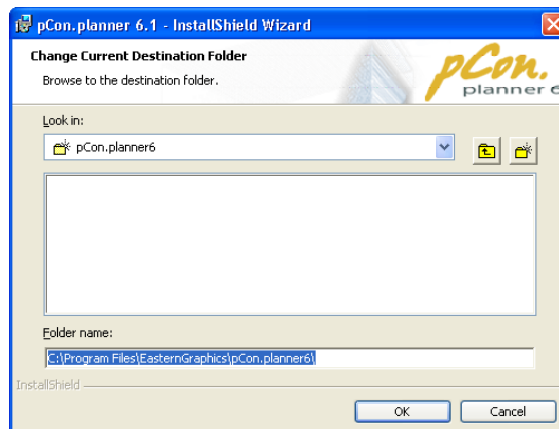
- Read the License Agreement. You will need to use the scroll bar to read the complete text.
- To continue the installation confirm “I accept the terms in the license agreement” and then click “Next”.



- If you do not wish to accept the license, you will be asked to confirm this before the installation program closes.
- Now the Custom Setup window appears.



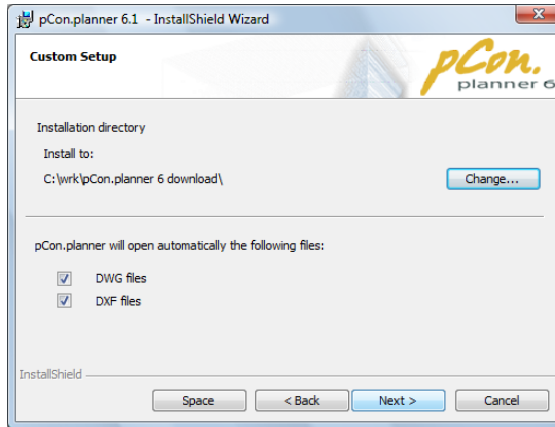
- In the upper half of the dialog you can select the directory you want to install the application to.
- If you wish to install it to the default folder, click "Next".
- For an alternative folder click "Change".
- A window to change the destination folder opens.



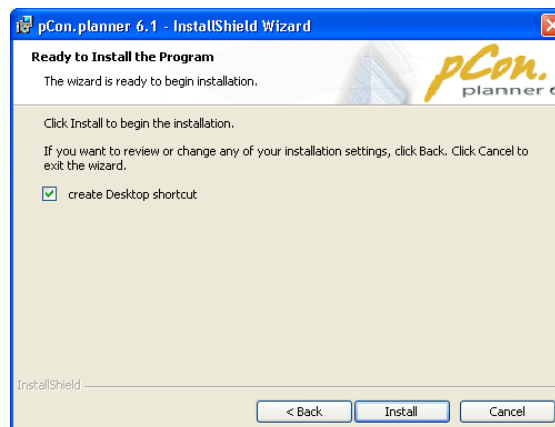
- Click the down arrow to the right of the search field and navigate to the destination folder.
- Click "OK" to return to the "Custom Setup" dialog.



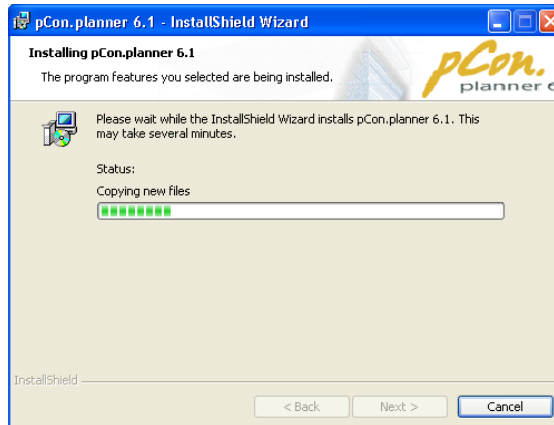
- In the lower half of this dialog you can determine whether DXF and DWG files are to be opened with pCon.planner 6 by default.



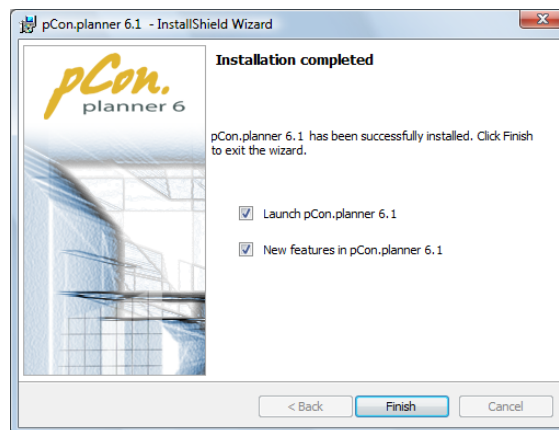
- Click “Next” to continue.
- The installation is now prepared and ready to begin. Click “Back” to return to previous windows to change your installation options.
- Check or uncheck the „create Desktop shortcut“
- Click “Install” to start the installation process.



- The installation Wizard starts to install pCon.planner on your computer.
- An interim window displays the current progress of the installation.



- The following window informs you about the completion of the installation.
- Check "Launch pCon.planner 6" to open the application right after installation.
- Click "New features in pCon.planner 6.1" to open the Release Notes which contain detailed information on all new features of version 6.1.
- Click "Finish" to complete the installation.



- You may now start to work with the pCon.planner 6. Enjoy!